

# RT522

**22 TON CAPACITY  
28 ft. - 70 ft. BOOM**

**(FULL POWER)**

**PCSA CLASS 10-80**

**85% OF TIPPING - ON OUTRIGGERS**

**75% OF TIPPING - ON RUBBER**

## JIB CAPACITIES IN POUNDS

### 23 ft. "A" FRAME JIB

| MAIN BOOM ANGLE | 0° OFFSET     |           | 15° OFFSET    |           | 30° OFFSET    |           |
|-----------------|---------------|-----------|---------------|-----------|---------------|-----------|
|                 | Radius (Ref.) | Cap. lbs. | Radius (Ref.) | Cap. lbs. | Radius (Ref.) | Cap. lbs. |
| 75°             | 27.0          | 12,000    | 32.5          | 7,700     | 35.7          | 5,070     |
| 70              | 33.3          | 10,400    | 38.1          | 7,000     | 41.2          | 4,800     |
| 65              | 40.2          | 8,300     | 44.9          | 6,300     | 47.8          | 4,500     |
| 60              | 47.0          | 5,870     | 51.3          | 5,450     | 54.0          | 4,300     |
| 55              | 53.2          | 4,450     | 57.3          | 4,080     | 59.8          | 3,690     |
| 50              | 59.2          | 3,560     | 62.9          | 3,170     | 65.1          | 3,030     |
| 45              | 64.7          | 2,910     | 68.0          | 2,610     | 69.9          | 2,590     |
| 40              | 69.6          | 2,400     | 72.6          | 2,230     | 74.2          | 2,160     |
| 35              | 74.0          | 2,020     | 76.6          | 1,920     | 77.9          | 1,880     |
| 30              | 77.8          | 1,730     | 80.1          | 1,680     | 81.0          | 1,670     |

A6-829-0037551

### 23 ft. - 38 ft. TELE. JIB

| Boom Angle | 23 ft. Jib Length (Fully Retracted) |           |                   |           |                   |           | 33 ft. Jib Length |           |                   |           |                   |           | 38 ft. Jib Length (Fully Extended) |           |                   |           |                   |           |
|------------|-------------------------------------|-----------|-------------------|-----------|-------------------|-----------|-------------------|-----------|-------------------|-----------|-------------------|-----------|------------------------------------|-----------|-------------------|-----------|-------------------|-----------|
|            | 0° Offset                           |           | 15° Offset        |           | 30° Offset        |           | 0° Offset         |           | 15° Offset        |           | 30° Offset        |           | 0° Offset                          |           | 15° Offset        |           | 30° Offset        |           |
|            | Radius (Ref.) ft.                   | Cap. lbs. | Radius (Ref.) ft. | Cap. lbs. | Radius (Ref.) ft. | Cap. lbs. | Radius (Ref.) ft. | Cap. lbs. | Radius (Ref.) ft. | Cap. lbs. | Radius (Ref.) ft. | Cap. lbs. | Radius (Ref.) ft.                  | Cap. lbs. | Radius (Ref.) ft. | Cap. lbs. | Radius (Ref.) ft. | Cap. lbs. |
| 75°        | 27.5                                | 12,500    | 31.4              | 7,300     | 35.0              | 4,500     | 29.0              | 7,600     | 35.3              | 4,900     | 41.5              | 2,900     | 31.0                               | 5,000     | 39.0              | 3,750     | 45.4              | 2,230     |
| 70         | 33.3                                | 9,390     | 37.8              | 6,390     | 40.6              | 4,150     | 35.9              | 6,500     | 42.5              | 4,270     | 48.8              | 2,650     | 37.9                               | 4,650     | 45.6              | 3,300     | 51.8              | 1,990     |
| 65         | 40.2                                | 6,670     | 44.7              | 5,750     | 47.2              | 3,900     | 43.9              | 5,300     | 50.2              | 3,820     | 56.1              | 2,440     | 46.3                               | 4,470     | 53.7              | 2,950     | 59.3              | 1,870     |
| 60         | 47.0                                | 5,020     | 51.3              | 4,630     | 53.6              | 3,680     | 51.6              | 4,300     | 57.5              | 3,450     | 62.8              | 2,330     | 54.3                               | 3,550     | 61.2              | 2,640     | 66.4              | 1,770     |
| 55         | 53.2                                | 3,860     | 57.3              | 3,420     | 59.5              | 3,120     | 58.8              | 3,320     | 64.3              | 2,770     | 69.2              | 2,230     | 62.0                               | 2,910     | 68.4              | 2,450     | 72.9              | 1,680     |
| 50         | 59.2                                | 3,080     | 62.9              | 2,790     | 65.1              | 2,650     | 65.7              | 2,590     | 70.7              | 2,190     | 74.9              | 1,910     | 69.2                               | 2,430     | 75.0              | 2,030     | 78.9              | 1,620     |
| 45         | 64.7                                | 2,450     | 68.0              | 2,280     | 69.9              | 2,180     | 71.9              | 2,060     | 76.5              | 1,730     | 80.2              | 1,600     | 75.8                               | 1,920     | 81.1              | 1,660     | 84.3              | 1,500     |
| 40         | 69.6                                | 1,980     | 72.6              | 1,870     | 74.2              | 1,750     | 77.7              | 1,640     | 81.7              | 1,400     | 84.7              | 1,360     | 81.8                               | 1,480     | 86.4              | 1,360     | 89.0              | 1,240     |
| 35         | 74.0                                | 1,580     | 76.6              | 1,530     | 77.9              | 1,440     | 82.8              | 1,300     | 86.2              | 1,150     | 88.6              | 1,130     | 87.2                               | 1,080     | 91.2              | 1,020     | 93.0              | 980       |
| 30         | 77.8                                | 1,290     | 80.1              | 1,270     | 81.0              | 1,230     | 87.3              | 1,020     | 90.2              | 940       | 91.8              | 920       | 92.0                               | 860       | 95.2              | 840       | 96.3              | 830       |

A6-829-003907F

No load stability on outriggers 360° with 23 ft. - 38 ft. tele-jib installed:

|   | Tele-jib fully Retracted<br>93 ft. | 33 ft. Tele-jib Length<br>103 ft. | Tele-jib fully Extended<br>108 ft. |
|---|------------------------------------|-----------------------------------|------------------------------------|
| Minimum boom angle for indicated boom length        | 0°                                 | 0°                                | 0°                                 |
| Maximum boom length including jib for 0° boom angle | 93 ft.                             | 103 ft.                           | 108 ft.                            |

### NOTES FOR JIB CAPACITIES

- 23 ft. jib and 23 ft. tele. jib length may be used for double lifting service. 33 ft. and 38 ft. tele. jib lengths may be used for single lifting service only. Capacities are based on structural strength of every jib at a given main boom angle regardless of main boom length.
- WARNING:** Operation of machine with heavier loads than the capacities listed is strictly prohibited. Machine tipping with jib occurs rapidly and without advance warning.
- Capacities listed are with fully extended outriggers only.
- WARNING:** Lifting on rubber with jib is prohibited.
- Reference radii listed are for fully extended main boom only.
- No load stability on outriggers with:
  - 23 ft. Jib Installed —
    - Minimum boom angle for fully extended main boom = 0°
    - Maximum boom length at 0° main boom angle = 93 ft.



# RT52

**22 TON CAPACITY**  
**28 ft. - 70 ft. BOOM**

**(FULL POWER)**  
**PCSA CLASS 10-8**  
**85% OF TIPPING - ON OUT**  
**75% OF TIPPING - ON R**

## RATED LIFTING CAPACITIES

### 28 ft. - 70 ft. BOOM

### ON OUTRIGGERS FULLY EXTENDED - 360°

| Radius in Feet  | Boom Length in Feet |               |               |               |               |               |               |               |
|---|---------------------|---------------|---------------|---------------|---------------|---------------|---------------|---------------|
|   | 28                  | 34            | 40            | 46            | 52            | 58            | 64            | 70            |
| 10  | 44,000 (64)         | 36,000 (69)   | 36,000 (73)   |               |               |               |               |               |
| 12  | 40,000 (59.5)       | 36,000 (65.5) | 36,000 (70)   | 35,000 (73)   |               |               |               |               |
| 15  | 31,000 (51.5)       | 31,000 (59.5) | 30,700 (65)   | 29,850 (69)   | 29,150 (72)   | 28,600 (74.5) |               |               |
| 20  | 23,200 (36.5)       | 23,200 (49)   | 23,200 (57)   | 23,200 (62)   | 23,000 (66)   | 22,600 (69.5) | 22,150 (72)   | 20,500 (74)   |
| 25  | 17,950 (6)          | 17,950 (36)   | 17,950 (47.5) | 17,950 (54.5) | 17,950 (60)   | 17,950 (64)   | 17,950 (67)   | 17,650 (69.5) |
| 30  |                     | 13,470 (15.5) | 13,470 (36.5) | 13,470 (46.5) | 13,470 (53)   | 13,470 (58)   | 13,470 (62)   | 13,470 (65)   |
| 35  |                     |               | 10,220 (20)   | 10,220 (36.5) | 10,220 (45.5) | 10,220 (51.5) | 10,220 (56.5) | 10,220 (60)   |
| 40  | See Warning Note 1c |               |               | 8,010 (23)    | 8,010 (36.5)  | 8,010 (45)    | 8,010 (50.5)  | 8,010 (55)    |
| 45  |                     |               |               |               | 6,530 (25)    | 6,530 (37)    | 6,530 (44.5)  | 6,530 (49.5)  |
| 50  |                     |               |               |               |               | 5,430 (26.5)  | 5,430 (37)    | 5,430 (43.5)  |
| 55  |                     |               |               |               |               | 4,440 (3.5)   | 4,440 (28)    | 4,440 (37)    |
| 60  |                     |               |               |               |               |               | 3,620 (13)    | 3,620 (28.5)  |
| 65  |                     |               |               |               |               |               |               | 2,980 (15.5)  |
| Min. boom angle (deg.) for indicated length [No Load]   |                     |               |               |               |               |               |               | 0             |
| Max. boom length (ft.) at 0 degree boom angle [No Load] |                     |               |               |               |               |               |               | 70.0          |

NOTE: Boom Angles are in degrees.

A6-829-003710 & -003716G

### 14.00x24 TIRES

| Radius in Feet | Stationary Capacity        | Stationary Capacity | Pick & Carry Cap. Up to 2.5 MPH |
|----------------|----------------------------|---------------------|---------------------------------|
|                | Defined Arc (3) Over Front | 360° Arc            | Boom Centered (7) Over Front    |
| 10             | 25,600 (a)                 | 21,100 (a)          | 21,610 (a)                      |
| 12             | 21,500 (a)                 | 15,780 (a)          | 18,520 (a)                      |
| 15             | 17,770 (a)                 | 10,430 (b)          | 15,050 (a)                      |
| 20             | 12,840 (b)                 | 5,950 (c)           | 12,060 (a)                      |
| 25             | 8,480 (b)                  | 3,570 (d)           | 8,480 (b)                       |
| 30             | 6,230 (c)                  | 2,320 (e)           | 6,230 (c)                       |
| 35             | 4,650 (d)                  | 1,470 (f)           | 4,650 (d)                       |
| 40             | 3,520 (e)                  | 910 (f)             | 3,000 (d)                       |
| 45             | 2,660 (f)                  |                     | 2,270 (e)                       |
| 50             | 2,020 (g)                  |                     | 1,680 (f)                       |
| 55             | 1,520 (g)                  |                     | 1,220 (f)                       |
| 60             | 1,130 (h)                  |                     |                                 |
| 65             | 880 (h)                    |                     |                                 |

A6-829-003763F

### Maximum Permissible Boom Length:

- (a) 28 ft. (e) 52 ft.
- (b) 34 (f) 58
- (c) 40 (g) 64
- (d) 46 (h) 70

|                 |  | Main Boom w/23 ft. Jib |
|-----------------|--|------------------------|
| Front (No Load) | Min. Boom Angle (deg.) for Indicated Boom Length | 0                      |
|                 | Max. Boom Length (ft.) at 0 degree Boom Angle    | 70                     |
| 360° (No Load)  | Min. Boom Angle (deg.) for Indicated Boom Length | 42                     |
|                 | Max. Boom Length (ft.) at 0 degree Boom Angle    | 52                     |

### ON OUTRIGGERS FULLY EXTENDED - OVER FRONT

| Radius in Feet  | Boom Length in Feet |               |               |               |               |               |               |               |
|---|---------------------|---------------|---------------|---------------|---------------|---------------|---------------|---------------|
|   | 28                  | 34            | 40            | 46            | 52            | 58            | 64            | 70            |
| 10  | 44,000 (64)         | 36,000 (69)   | 36,000 (73)   |               |               |               |               |               |
| 12  | 40,000 (59.5)       | 36,000 (65.5) | 36,000 (70)   | 35,000 (73)   |               |               |               |               |
| 15  | 31,000 (51.5)       | 31,000 (59.5) | 30,700 (65)   | 29,850 (69)   | 29,150 (72)   | 28,600 (74.5) |               |               |
| 20  | 23,200 (36.5)       | 23,200 (49)   | 23,200 (57)   | 23,200 (62)   | 23,000 (66)   | 22,600 (69.5) | 22,150 (72)   | 20,500 (74)   |
| 25  | 17,950 (6)          | 17,950 (36)   | 17,950 (47.5) | 17,950 (54.5) | 17,950 (60)   | 17,950 (64)   | 17,950 (67)   | 17,650 (69.5) |
| 30  |                     | 15,350 (15.5) | 15,350 (36.5) | 15,350 (46.5) | 15,350 (53)   | 15,150 (58)   | 14,950 (62)   | 14,750 (65)   |
| 35  |                     |               | 11,900 (20)   | 11,900 (36.5) | 11,900 (45.5) | 11,900 (51.5) | 11,900 (56.5) | 11,900 (60)   |
| 40  | See Warning Note 1c |               |               | 9,410 (23)    | 9,410 (36.5)  | 9,410 (45)    | 9,410 (50.5)  | 9,410 (55)    |
| 45  |                     |               |               |               | 7,720 (25)    | 7,720 (37)    | 7,720 (44.5)  | 7,720 (49.5)  |
| 50  |                     |               |               |               |               | 6,410 (26.5)  | 6,410 (37)    | 6,410 (43.5)  |
| 55  |                     |               |               |               |               |               | 5,410 (3.5)   | 5,410 (28)    |
| 60  |                     |               |               |               |               |               |               | 4,530 (13)    |
| 65  |                     |               |               |               |               |               |               | 3,780 (15.5)  |
| Min. boom angle (deg.) for indicated length [No Load]   |                     |               |               |               |               |               |               | 0             |
| Max. boom length (ft.) at 0 degree boom angle [No Load] |                     |               |               |               |               |               |               | 70.0          |

NOTE: Boom Angles are in degrees.

A6-829-003704 & -003716G

### GENERAL:

- Rated loads as shown on lift chart pertain to this machine as and equipped. Modifications to the machine or use of options that specified can result in a reduction of capacity.
- Construction equipment can be hazardous if improperly operated. Operation and maintenance of this machine shall be in accordance with information in the operator's, parts, and safety manuals supplied. If these manuals are missing, order replacements from the manufacturer.
- The operator and other personnel associated with this machine shall themselves with the latest applicable American National Standards for cranes.

### SETUP:

- The machine shall be leveled on a firm supporting surface. If the supporting surface, it may be necessary to have structural outrigger floats or tires to spread the load to a larger bearing surface.
- For outrigger operation, outriggers shall be fully extended and crane weight before operating the boom or lifting loads.
- If machine is equipped with front jack cylinder, the front jack shall be extended in accordance with written procedure.
- If machine is equipped with extendable counterweight, the counterweight shall be fully extended before operation.
- Tires shall be inflated to the recommended pressure before lifting.
- With certain boom and hoist tackle combinations, maximum capacity shall be obtainable with standard cable lengths.

### OPERATION:

- Rated loads at rated radius shall not be exceeded. Do not determine allowable loads. For clamshell or concrete bucket bucket and load must not exceed 80% of rated lifting capacity.
- Rated loads do not exceed 85% of the tipping load as determined by the Stability Test Code J-765a.
- Rated loads include the weight of hook block, slings and auxiliary weights shall be subtracted from the listed ratings to obtain net lifting capacity.
- Load ratings are based on freely suspended loads. No attempt shall be made to lift a load horizontally on the ground in any direction.
- Rated loads do not account for wind on lifted load or boom. When wind velocity is above 20 mph (32 km/h), rated loads shall be appropriately reduced.

# ON RUBBER CAPACITIES

## 16.00x25 TIRES

| Radius<br>in<br>Feet | Stationary<br>Capacity        | Stationary<br>Capacity | Pick&CarryCap<br>Up to 2.5 mph  |
|----------------------|-------------------------------|------------------------|---------------------------------|
|                      | Defined Arc (3)<br>Over Front | 360° Arc               | Boom Centered<br>(7) Over Front |
| 10                   | 29,150 (a)                    | 19,640 (a)             | 30,460 (a)                      |
| 12                   | 24,030 (a)                    | 14,600 (a)             | 26,320 (a)                      |
| 15                   | 20,150 (a)                    | 10,390 (b)             | 21,670 (a)                      |
| 20                   | 13,350 (b)                    | 5,980 (c)              | 13,350 (a)                      |
| 25                   | 8,610 (b)                     | 3,500 (d)              | 8,290 (b)                       |
| 30                   | 6,290 (c)                     | 2,160 (e)              | 6,290 (c)                       |
| 35                   | 4,650 (d)                     | 1,430 (f)              | 4,650 (d)                       |
| 40                   | 3,620 (e)                     | 810 (f)                | 3,620 (d)                       |
| 45                   | 2,800 (f)                     |                        | 2,800 (e)                       |
| 50                   | 2,120 (g)                     |                        | 2,120 (f)                       |
| 55                   | 1,630 (g)                     |                        | 1,630 (f)                       |
| 60                   | 1,240 (h)                     |                        |                                 |
| 65                   | 960 (h)                       |                        |                                 |

A6-829-003757F

## 20.5x25 TIRES

| Radius<br>in<br>Feet | Stationary Capacity           |            | Pick & Carry Capacity<br>Up to 2.5 MPH |
|----------------------|-------------------------------|------------|--|
|                      | Defined Arc<br>Over Front (3) | 360° Arc   | Boom Centered<br>Over Front (7)        |
| 10                   | 28,380 (a)                    | 24,450 (a) | 26,020 (a)                             |
| 12                   | 23,800 (a)                    | 17,190 (a) | 22,420 (a)                             |
| 15                   | 19,100 (a)                    | 11,640 (b) | 18,380 (a)                             |
| 20                   | 13,940 (b)                    | 7,180 (c)  | 13,940 (a)                             |
| 25                   | 9,160 (b)                     | 4,330 (c)  | 9,160 (b)                              |
| 30                   | 6,640 (c)                     | 2,930 (d)  | 4,830 (c)                              |
| 35                   | 5,100 (d)                     | 2,000 (e)  | 3,790 (d)                              |
| 40                   | 4,020 (e)                     | 1,370 (f)  | 3,020 (d)                              |
| 45                   | 3,140 (f)                     | 880 (g)    | 2,310 (e)                              |
| 50                   | 2,430 (g)                     |            | 1,710 (f)                              |
| 55                   | 1,860 (g)                     |            | 1,210 (f)                              |
| 60                   | 1,440 (h)                     |            |  |
| 65                   | 1,100 (h)                     |            |  |

A6-829-003745G

### NOTES FOR RUBBER CAPACITIES

- Capacities do not exceed 75% of tipping loads as determined by test in accordance with SAE J-765.
- Capacities are applicable to machines equipped with:
 

|                   |                |         |
|-------------------|----------------|---------|
| 14:00x24 (20 ply) | Cold Inflation | 2.5 MPH |
| 16.00x25 (20 ply) | 115 PSI        | 110 PSI |
| 20.5x25 (20 ply)  | 95 PSI         | 80 PSI  |
|                   | 80 PSI         | 65 PSI  |

- Defined Arc - Over front includes  $\pm 6^\circ$  on either side of longitudinal centerline of machine.
- Capacities appearing above bold line are based on structural strength and tipping should not be relied upon as a capacity limitation.
- Capacities are applicable only with machine on a firm level surface.
- On rubber lifting with jib not permitted.
- For pick and carry operation, boom must be centered over front of machine and mechanical swing lock engaged. When handling loads in the structural range with capacities close to maximum ratings, travel should be reduced to creep speed.
- Axle lockouts must be functioning before lifting on rubber. (Check automatic lockout system for proper functioning: Refer to "Operation and Maintenance Manual" for description of a proper functioning axle lockout system).
- All lifting depends on proper tire inflation, capacity and condition. Capacities must be reduced for lower tire inflation pressures. See lifting capacity chart for tire used. Damaged tires are hazardous to safe operation of crane.

### LIFTING CAPACITY NOTES

as originally manufactured  
tional equipment other than

ly operated or maintained.  
e in compliance with the  
supplied with this machine.  
e manufacturer through the

machine shall fully acquaint  
Standards Institute (ANSI)

ce. Depending on the nature  
structural supports under the  
ing surface.

ded with tires raised free of

jack cylinder shall be set in

the counterweight shall be

re lifting on rubber.  
imum capacities may not be

do not tip the machine to  
ucket operation, weight of  
capacities.

as determined by SAE Crane

auxiliary lifting devices and  
to obtain the net load to be

empt shall be made to move

r boom. It is recommended  
oads and boom lengths shall

- Rated loads are for lift crane service only.
- Do not operate at a radius or boom length where capacities are not listed. At these positions, the machine may overturn without any load on the hook.
- The maximum load which can be telescoped is not definable because of variations in loadings and crane maintenance, but it is safe to attempt retraction and extension within the limits of the capacity chart.
- When either boom length or radius or both are between values listed, the smallest load shown at either the next larger radius or boom length shall be used.
- For safe operation, the user shall make due allowances for his particular job conditions, such as: soft or uneven ground, out of level conditions, high winds, side loads, pendulum action, jerking or sudden stopping of loads, hazardous conditions, experience of personnel, two machine lifts, traveling with loads, electric wires, etc. Side pull on boom or jib is extremely dangerous.
- Power telescoping boom sections must be extended equally at all times.
- Handling of personnel from the boom is not authorized except with equipment furnished and installed by Grove Manufacturing Company.
- Keep load handling devices a minimum of 12 inches (30 cm) below boom head when lowering or extending boom.
- Loaded boom angles give an approximation of the operating radius at specified boom lengths. The boom angle before loading should be greater to account for deflection.
- Capacities appearing above bold line are based on structural strength and tipping should not be relied upon as a capacity limitation.
- Capacities for 28 ft. (8.6m) boom length shall be lifted with the boom fully retracted. If boom is not fully retracted, capacities shall not exceed those shown for the 34 ft. (10.4m) boom length.

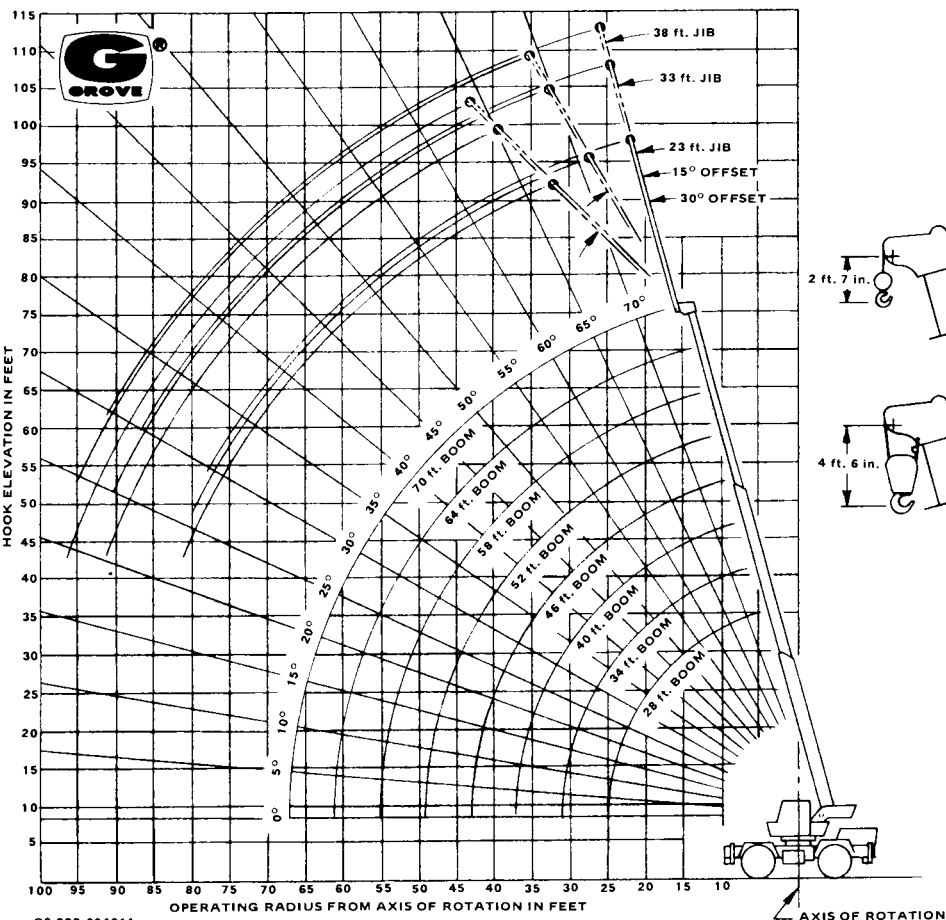
#### DEFINITIONS:

- Operating Radius: Horizontal distance from a projection of the axis of rotation to the supporting surface before loading to the center of the vertical hoist line or tackle with load applied.
- Loaded Boom Angle (Shown in Parenthesis on Main Boom Capacity Chart): is the angle between the boom base section and the horizontal, after lifting the rated load at the rated radius.
- Working Area: Areas measured in a circular arc about the center line of rotation as shown on the working area diagram.
- Freely Suspended Load: Load hanging free with no direct external force applied except by the lift cable.
- Side Load: Horizontal force applied to the lifted load either on the ground or in the air.

# GROVE®

# RT522

## RANGE DIAGRAM



C6-829-004011

### WEIGHT REDUCTIONS FOR LOAD HANDLING DEVICES

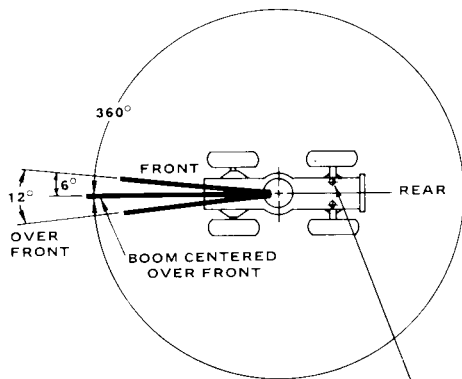
|                                   |              |
|-----------------------------------|--------------|
| 23 ft. JIB<br>with 28-70 ft. BOOM |              |
| *Stowed                           | - 381 lbs.   |
| *Erected                          | - 1,950 lbs. |

|  |              |
|--|--------------|
| 23-38 ft. TELE. JIB<br>with 28-70 ft. BOOM |              |
| *Stowed                                    | - 604 lbs.   |
| *Erected (Retracted)                       | - 3,659 lbs. |
| *Erected (Extended)                        | - 4,583 lbs. |
| *Reduction of main boom capacities.        |              |

|                               |         |
|-------------------------------|---------|
| HOOK BLOCKS                   |         |
| 22 Ton, 3 Sheave              | 490 lb. |
| 15 Ton, 2 Sheave              | 300 lb. |
| 12 Ton, 1 Sheave (15 7/8" OD) | 400 lb. |
| 12 Ton, 1 Sheave (12 1/8" OD) | 285 lb. |
| Auxiliary Boom Head           | 100 lb. |
| 5 Ton Headache Ball           | 150 lb. |

NOTE: All Load Handling Devices and Boom Attachments are Considered Part of the Load and Suitable Allowances MUST BE MADE for Their Combined Weights. Weights are for Grove furnished equipment.

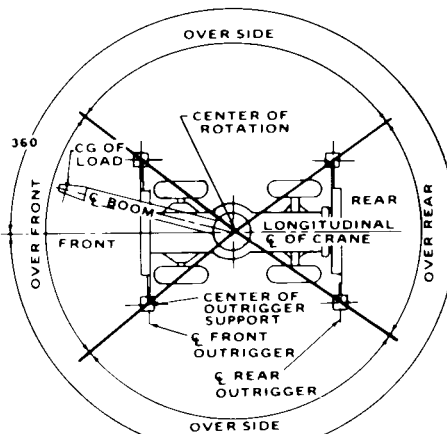
### LIFTING AREA DIAGRAMS



REAR AXLE OSCILLATION LOCKOUTS MUST BE SET TO MAINTAIN 360° CAPACITIES.

NOTE: BOLD LINES DETERMINE THE LIMITING POSITION OF ANY LOAD FOR OPERATION WITHIN ANY WORKING AREAS INDICATED.

C6-829-003529



NOTE: BOLD LINES DETERMINE THE LIMITING POSITION OF ANY LOAD FOR OPERATION WITHIN WORKING AREAS INDICATED.

NOTE: OVER SIDE CAPACITIES CAN BE LIFTED IN THE OVER REAR AREA.

C6-829-001159